

# ACE

# 18 XW

## Hydraulic Mobile Crane

Capacity : 18 tonnes

Engine Power : 101 bhp.

Rough terrain and rugged articulated pick 'n' move crane.

**ACE** INDIA'S NO. 1  
MOBILE & TOWER CRANE CO.



Nothing beats an **ACE**

# Specifications

# 18 XW

<b>LIFTING CAPACITY</b> (Free on wheels)	18 Tonnes
<b>ENGINE</b>	Ashok Leyland ALHT4CTIC3/1 (Bs3 CEV) 4 Cylinder, Water Cooled OR Suitable Equivalent engine.
Rated Power	101 HP (74.3 KW) 2200 RPM
<b>TRANSMISSION</b>	Heavy Duty (ZF) with 8 forward & 2 reverse speeds and high-low range selector. 12" Heavy Duty, single, dry friction, wire woven clutch plate with diaphragm type pressure plate
Top Speed	46 KMPH without load
<b>STEERING</b>	Hydraulically operated with 55° articulation on either side and turning radius of 6.5 mtrs. (approx) on outer rear wheels.
<b>BRAKES</b>	Pneumatically assisted hydraulic brakes are provided on front wheels and pneumatic brakes are provided on rear wheels. Parking brake is pneumatically operated fail safe type, provided on rear wheels. Front and rear brakes are actuated through a single pedal.
<b>HYDRAULIC SYSTEM</b>	<ul style="list-style-type: none"> <li>● Intra vane type main pump.</li> <li>● 4 spools control valve (heavy duty).</li> <li>● Suction line has 100 mesh size strainer while return line is fitted with 25 micron full flow filter.</li> <li>● Two double acting lift cylinders, two double acting steering cylinders and one double acting extension cylinder.</li> </ul>
<b>ELECTRICAL SYSTEM</b>	24V. heavy duty battery with negative earth & suitable alternator.
<b>TELESCOPIC BOOM</b>	4 part boom, 3 part hydraulically actuated & Synchronized and 4th part power extended having self adjusting hook block.

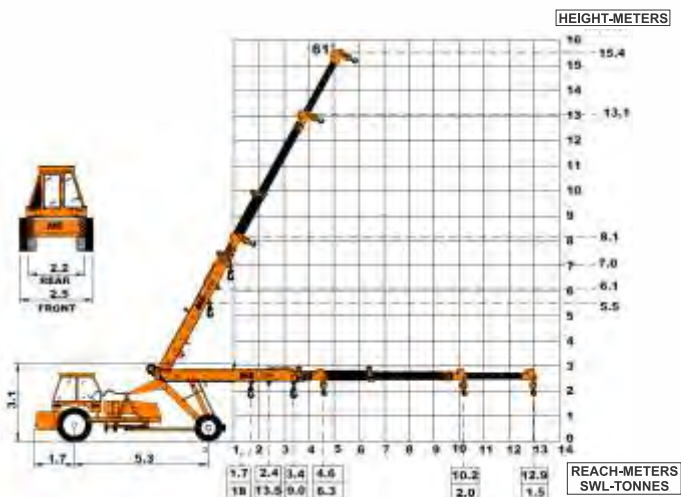
<b>BOOM LUFFING</b>	
Range	-1° to + 62°
Time	20 Seconds.
<b>HOIST</b>	Winch is driven by hydraulic motor and fitted with self adjusting hook block employing 4 fall of 13mm dia. rope.
Front	55 mtr/min (Line Speed)
<b>TYRES</b>	
Front	12.00 x 20 - 18 PR (4 Nos.)
Rear	14.00 x 25 - 20 PR (2 Nos.)
<b>SAFETY</b>	<ul style="list-style-type: none"> <li>● Hose Failure Protection</li> <li>● Audio Over hoisting indication</li> <li>● Safety Brakes on hoist</li> <li>● Self-adjusting Hook Block</li> </ul>
<b>FLUID CAPACITIES</b>	
Engine	10.00 Ltrs.
Fuel Tank	145.00 Ltrs.
Hydraulic Tank	180.00 Ltrs.
Gear Box ZF	7.00 Ltrs.
Auxiliary Gear Box	3.00 Ltrs.
Differential	18.00 Ltrs.
<b>STANDARD EQUIPMENT</b>	<ul style="list-style-type: none"> <li>● ROPS fully enclosed wide view cabin</li> <li>● Front and rear work lights.</li> <li>● Reflectors &amp; rear view mirror.</li> <li>● Tool kit.</li> <li>● Cabin Fan</li> <li>● Wiper Motor</li> <li>● Gauges :- <ul style="list-style-type: none"> <li>a) Water temperature.</li> <li>b) Engine oil pressure.</li> <li>d) RPM meter cum hour recorder</li> <li>e) Air pressure</li> </ul> </li> </ul>
<b>OPTIONAL EQUIPMENT</b>	<ul style="list-style-type: none"> <li>● Fly Jib</li> <li>● Spark Arrester</li> <li>● Safe load indicator / LMI</li> <li>● Over Hoist hydraulic cutoff</li> <li>● Fire extinguisher</li> <li>● Beacon Light</li> <li>● Steering Wheel</li> </ul>
<b>OPERATING WEIGHT</b>	14500 kgs.

# ACE

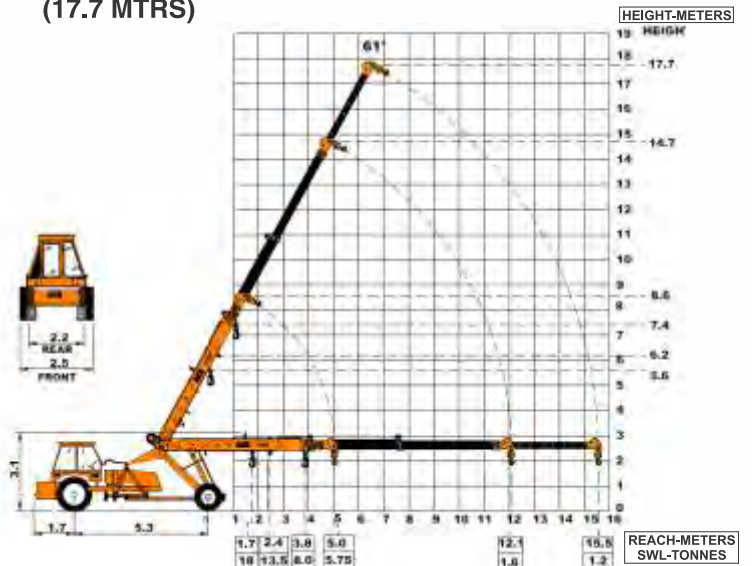
# 18 KW



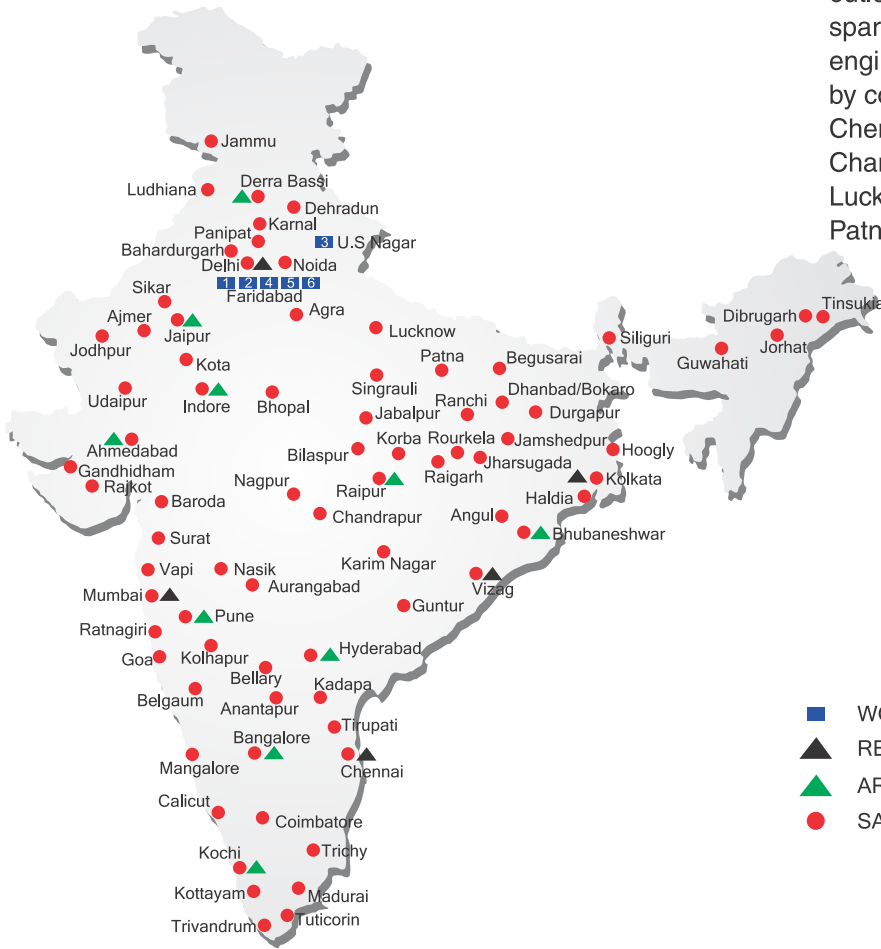
**18XW - (3P+1 MANUAL)**  
**(15.4 MTRS)**



**18XW (3P+1 MANUAL)**  
**(17.7 MTRS)**



# ALL INDIA NETWORK



## SPARE PARTS & SERVICE

ACE has all India Sales and Service network operating out of all the major cities. These outlets are fully equipped to provide genuine spare parts and services by company trained engineers. These outlets are further supported by company officials based at Delhi, Mumbai, Chennai, Kolkatta, Ahmedabad, Pune, Jaipur, Chandigarh, Ranchi, Raipur, Indore, Bhubneshwar, Lucknow, Hyderabad, Bangalore, Guwahati, Patna, Vizag & Cochin.

- WORKS
- ▲ REGIONAL OFFICES
- ▲ AREA OFFICES
- SALES AND SERVICE DEALERS



**Action Construction Equipment Ltd.**

Contact:



ACE reserves the right to alter any specifications without prior notice. Dimensions, weights & capacities mentioned herein are variable by ± 5%. Accessories if shown are not part of the Standard Equipment.

### MARKETING H.Q.

5th Floor, "TDI Center", Jasola, New Delhi - 25  
Ph.: +91-11-40549900 (30 Lines) Fax : 40549922  
E-mail: marketing@ace-cranes.com

### MUMBAI OFFICE

31, "Kalpataru Court", Chembur, Mumbai - 74  
Ph.: 022 - 25206846 Telefax : 25207071  
E-mail: acemumbai@ace-cranes.com

### KOLKATA OFFICE

"Fomra Towers" 84-A, Second Floor, AJC Bose Road, Kolkatta - 14. Ph. 033-32578307, Telefax: 22274428  
E-mail: acekolkatta@ace-cranes.com

### CHENNAI OFFICE

1st Floor, "Alsa Regency", 165, Eldams Road, Alwar Pet, Chennai - 18  
Ph.: 044 - 24314253 Telefax : 24314252  
E-mail: acechennai@ace-cranes.com

