

# ACE

# 12 XW

## Hydraulic Mobile Crane

12 tonnes Capacity.  
Rough terrain and rugged  
articulated pick n move crane.



**INDIA'S NO. 1**  
MOBILE & TOWER CRANE CO.



- Slotted boom
- Self Adjusting hook block
- Ergonomically designed Cabin

*Nothing beats an **ACE***

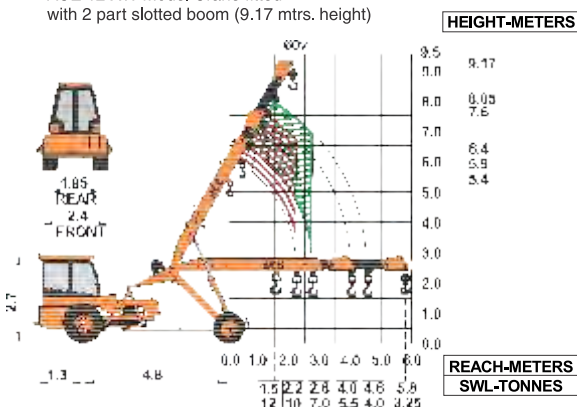
# Specifications

# 12XW

<b>LIFTING CAPACITY</b> (Free on wheels)	12 Tonnes
<b>ENGINE</b>	Simpson's S433(I) F1, 4 cylinder, water cooled diesel engine or suitable equivalent engine
Rated Power	48 BHP (36KW) at 2200 RPM.
<b>TRANSMISSION</b>	Heavy duty, sliding mesh with 6 forward and 2 reverse speeds with high low range selector.
Clutch	Heavy duty, single, dry friction, wire woven clutch plate with diaphragm type pressure plate.
Top Speed	28 KMPH without load.
<b>POWER STEERING</b>	55° articulation through 2 hydraulic cylinders on either side and turning radius of 6.5 Mtrs. (approx) on outer edge of rear wheels.
<b>BRAKES</b>	Pneumatically assisted hydraulic brakes. Front and rear brakes are actuated through a single pedal.  Parking brake is Provided.
<b>HYDRAULIC SYSTEM</b>	<ul style="list-style-type: none"> <li>● Gear/Intra vane type main pump.</li> <li>● Four spools control valve.</li> <li>● Suction line has 100 mesh size strainer while return line is fitted with 25 micron full flow filter.</li> <li>● Two double acting lift cylinders, two double acting steering cylinders and one double acting extension cylinder.</li> </ul>

<b>ELECTRICAL SYSTEM</b>	12V. Negative earth with 35 Amp. alternator and 88 Amp hr. battery.
<b>TELESCOPIC BOOM</b>	Two part slotted boom with hydraulically operated extension.
Telescoping Time	12 Seconds.
<b>BOOM LUFFING</b>	
Range	-5° to + 60°
Time	21 Seconds.
<b>HOIST</b>	Winch is driven by hydraulic motor employing 4 falls of 13 mm dia rope and fitted with self adjusting hook block.
Hoist Speed	50 Mtrs./Min. (Line speed)
<b>TYRES</b>	
Front	11.00 x 20 - 16 PR (4 Nos.)
Rear	13.00 x 24 - 12 PR (2 Nos.)
<b>SAFETY</b>	<ul style="list-style-type: none"> <li>● Audio overload indication.</li> <li>● Hose failure protection.</li> <li>● Audio over hoisting indication.</li> <li>● Safety brakes on hoist.</li> <li>● Cylinder guards.</li> <li>● Self adjusting hook block.</li> </ul>
<b>FLUID CAPACITIES</b>	
Air Cleaner	0.75 Ltrs.
Engine	8.00 Ltrs.
Fuel Tank	50.00 Ltrs.
Hydraulic Tank	125.00 Ltrs.
Transmission	57.00 Ltrs.
<b>STANDARD EQUIPMENT</b>	<ul style="list-style-type: none"> <li>● ROPS fully enclosed wide view cabin with rotomould canopy.</li> <li>● Front tyre protector.</li> <li>● Front and rear work lights.</li> <li>● Reflectors &amp; rear view mirror.</li> <li>● Tool kit.</li> <li>● Gauges :-                             <ol style="list-style-type: none"> <li>a) Water temperature.</li> <li>b) Engine oil pressure.</li> <li>c) RPM meter cum hour recorder</li> </ol> </li> </ul>
<b>OPTIONAL EQUIPMENT</b>	<ul style="list-style-type: none"> <li>● Fly jib.</li> <li>● Lever type steering in lieu of Steering Wheel.</li> <li>● Three part hydraulically actuated slotted boom (height 11.25 mtrs or 12.9 mtrs)</li> <li>● Spark arrester.</li> <li>● City type double driving cabin.</li> <li>● Over hoisting hydraulic cut off.</li> <li>● Safe load indicator / LMI.</li> </ul>
<b>OPERATING WEIGHT</b>	9250 kgs. (for 2 Part) 9800 kgs. (for 3 Part - 11.25 Mtrs.)

ACE 12 XW Model Crane fitted with 2 part slotted boom (9.17 mtrs. height)



NOTE: All above specifications are pertaining to 12XW model fitted with 2 part boom



**1 STEERING WHEEL & CONTROLS**  
Steering wheel is provided as a standard feature, which along with ergonomically placed operator console and instrument cluster ensure ease of operation.



**2 INCREASED VISIBILITY**  
Bigger size front windscreen and re-routing of hoses provide much better front visibility.



**3 ROPS CABIN**  
Wide view ROPS cabin with curved windscreen for better visibility.



**4 TRAVEL SPEED**  
Travel speed of 28 kmph provides faster intersite movements.



**6 STEERING CYLINDERS**  
700 mm stroke cylinders ensure proper steering even in loose, sandy & rocky terrains.



**5 MAIN FRAME**  
Heavy duty & robust construction.



**8 CITY TYPE DOUBLE DRIVING CABIN**

**7 GROUND CLEARANCE**  
High ground clearance of 400mm for easier rough terrain operation.



**8 CITY TYPE DOUBLE DRIVING CABIN**

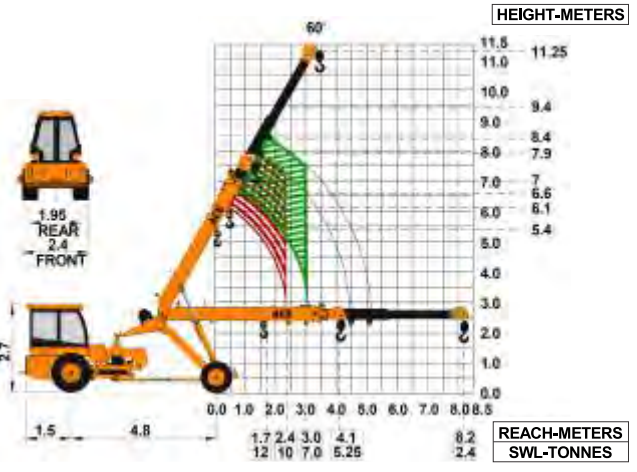


**9 SELF ADJUSTING HOOK BLOCK**  
Provides for safe boom extension and prevents damage of wire rope.



**10 SLOTTED BOOM**  
For easier load positioning

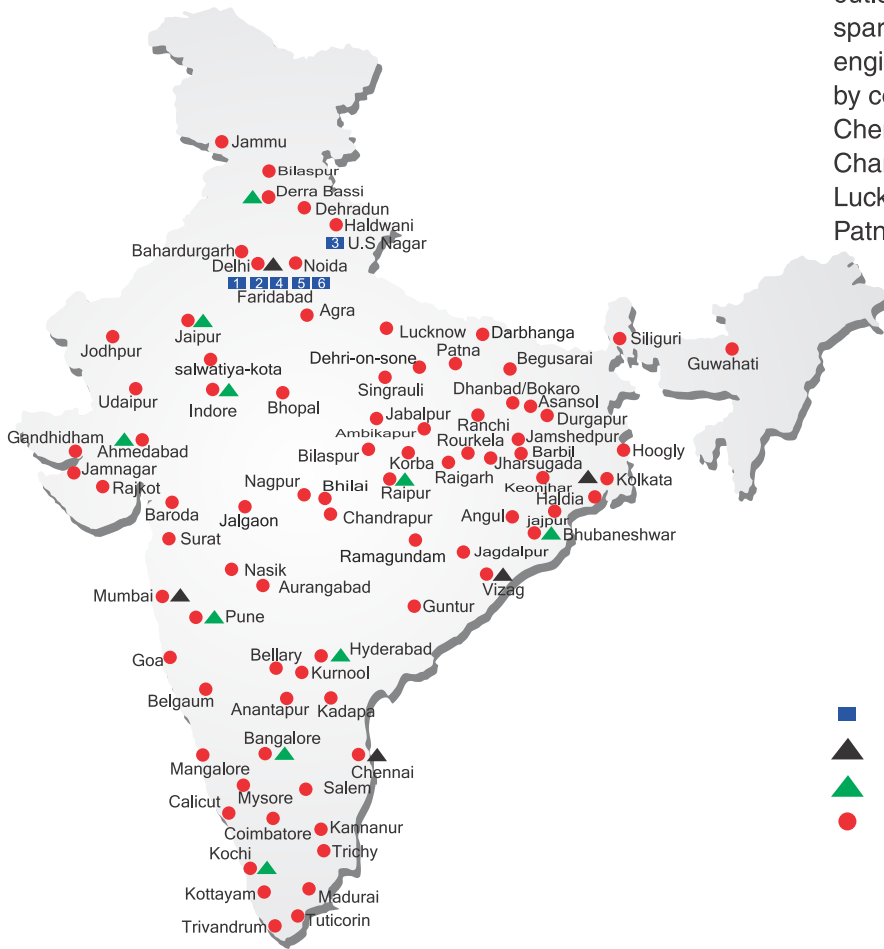
ACE 12 XW Model Crane fitted with 3 part slotted boom (11.25 mtrs. height)



ACE 12 XW Model Crane fitted with 3 part slotted boom (12.90 mtrs. height)



# ALL INDIA NETWORK



## SPARE PARTS & SERVICE

ACE has all India Sales and Service network operating out of all the major cities. These outlets are fully equipped to provide genuine spare parts and services by company trained engineers. These outlets are further supported by company officials based at Delhi, Mumbai, Chennai, Kolkatta, Ahmedabad, Pune, Jaipur, Chandigarh, Ranchi, Raipur, Indore, Bhubneshwar, Lucknow, Hyderabad, Bangalore, Guwahati, Patna, Vizag & Cochin.

- WORKS
- ▲ REGIONAL OFFICES
- ▲ AREA OFFICES
- SALES AND SERVICE DEALERS



### MARKETING H.Q.

5th Floor, "TDI Center", Jasola, New Delhi - 25  
Ph.: +91-11-40549900 (30 Lines) Fax : 40549922  
E-mail: marketing@ace-cranes.com

### MUMBAI OFFICE

31, "Kalpataru Court", Chembur, Mumbai - 74  
Ph.: 022 - 25206846 Telefax : 25207071  
E-mail: acemumbai@ace-cranes.com

### KOLKATA OFFICE

"Fomra Towers" 84-A, Second Floor, AJC Bose Road, Kolkatta - 14. Ph. 033-32578307, Telefax: 22274428  
E-mail: acekolkatta@ace-cranes.com

### CHENNAI OFFICE

1st Floor, "Alsa Regency", 165, Eldams Road, Alwar Pet, Chennai - 18  
Ph.: 044 - 24314253 Telefax : 24314252  
E-mail: acechennai@ace-cranes.com



**Action Construction Equipment Ltd.**

Contact:

**CUSTOMER CARE**  
TOLL FREE No  
**1800 1800 004**



ACE reserves the right to alter any specifications without prior notice. Dimensions, weights & capacities mentioned herein are variable by ± 5%. Accessories if shown are not part of the Standard Equipment.

